

# CP 550



## EXTENSIVE RANGE OF TESTS TO CARRY OUT COMPREHENSIVE EYE EXAM IN A SIMPLE WAY!



remote  
control



CP 550

CHART PROJECTOR



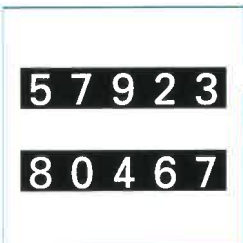
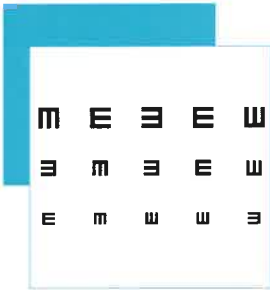
Min : 2 m

Max : 7 m

pola

Optometry





## EXTENSIVE CHOICE OF TESTS

- Visual acuity: Letter, Numbers, Snellen, Landolt C, children charts.
- Binocular balance and special tests: Astigmatism, polarised tests, red/green tests, Aniseikonia, Schober, Phoria...
- 2 types of progression available : A type or B type.

## FLUID ACUITY ASSESSEMENT

- Can be managed either by remote control or by APH550 automatic phoropter keyboard.
- Long lasting LED illumination provides bright and clear images.
- Fast and quiet disk rotation ensures patient comfort.

## OPTIONS

- Wallmount bracket, telescopic tube, polarised filter glass, R&G glass

<b>PROJECTION</b>		<b>TESTS (A OR B TYPE)</b>	
Size	335 x 222 mm (at 5m)	Optotypes	Numbers, Letters, Landolt C, Snellen, Children
Magnification	30 x (at 5m)		
Distance	Projection distance 2.m~7m		
<b>NUMBER OF CHARTS</b>	50	Mask and tests	Lines (Horizontal/Vertical) Astigmatism, Cross-cylinder, Jackson Cross, Worth 4 dots Binocular balance Duochrome balance Coincidence Schober, Phoria Minute stereo Fixation point Eye picture
<b>PROJECTION SPEED</b>	0.03 seconds		
<b>AUTOMATIC SHUT-OFF</b>	5mn		
<b>PROGRAM SETTINGS</b>	2 specific programmable test sequences		
<b>STANDARD ACCESSORIES</b>	Table base stand Remote control + Batteries Spare fuses 250v - 2AT Projection screen Calibration sheet Test card Dust cover	<b>DIMENSIONS AND WEIGHT</b>	248(W) x 234(H) x 336(D)mm - 4.5kg
		<b>PROJECTION LAMP</b>	30 VA
		<b>POWER SUPPLY</b>	AC 100 - 240V, 50/60 Hz
		CE Conformity marking	

As improvements are made, these specifications and pictures are not contractually binding and may be changed without prior notice.

### PRODUCT FUNCTIONS



Illumination



Projection distance



Linear polarisation



Wireless connection capability