

ESSILOR **PRODUCT** GUIDE



THE RIGHT CHOICE FOR EYE CARE PROFESSIONALS

ABOUT ESSILOR

ESSILOR INSTRUMENTS IS A LEADER IN THE DEVELOPMENT OF MODERN **SOLUTIONS AND TECHNOLOGIES FOR EYE CARE PROFESSIONALS** THROUGHOUT THE WORLD.

OUR GOAL IS TO **PROVIDE TO OUR CUSTOMERS THE EQUIPMENT** AND THE SERVICE THAT WILL MEET THEIR BUSINESS NEEDS AND WILL HELP THEM **BUILD A TRUSTFUL RELATIONSHIP WITH THEIR PATIENTS**, THANKS TO A THOROUGH UNDERSTANDING OF LOCAL BUSINESS NEEDS AND OF EACH PRACTICE AREA, AS WELL AS OUR WORLDWIDE PRESENCE.

WITH **CONSTANT INNOVATION** FROM OUR R&D TO MEET THESE CHALLENGES, WE HAVE REACHED **A WORLDWIDE LEADING POSITION** IN SEVERAL CATEGORIES SUCH AS FINISHING, REFRACTION AND DIAGNOSTIC EQUIPMENT, VISUAL SCREENING, PD MEASUREMENT OR TOOLS AND CONSUMABLES TO MEET YOUR DAILY EXPECTATIONS.

BEST FULL SERVICE
QUALITY & PERFORMANCE OF **PRODUCTS**
WIDE RANGE OF PRODUCTS
WORLDWIDE **PRESENCE**

A RANGE THAT COMBINES STATE-OF-THE-ART
TECHNOLOGY TO:



IMPROVE
THE EFFICIENCY OF
YOUR PRACTICE



ENHANCE
THE PATIENT
EXPERIENCE



HIGHLIGHT
YOUR EXPERTISE



1 Examination Room

p 3



2 Screening and Diagnostic Room

p 21



3 Lens Finishing Systems

p 33



4 Dispensing Equipment

p 47



5 Vision Screeners and Tests

p 53



6 Handheld Instruments

p 59



7 Accessories and Consumables

p 65



1

Examination Room

Whether you are performing **comprehensive optometric tests** or focusing on **prescription checks**, you can choose the appropriate function level and be sure of reliable measurements, even in the most complex cases.

- Phoropters p 4
- Chart systems p 5
- Classic slit lamps p 6
- Digital slit lamps p 8
- Digital camera p 9
- Stands and chairs p 10
- Examination tables and stools p 14
- Exam lane sets p 16
- Applanation tonometers p 19

Solutions for accurate and precise visual assessment

MPH 150 MANUAL PHOROPTER

> Benchmark manual refractor

- Flexible and high quality mechanical design
- Large range of lenses and filters
- Convergence mechanism for near vision examination
- Available in black and plus-cylinder models



APH 550 AUTOMATIC PHOROPTER

> High-end automatic phoropter for speed, precision and comfort in every refraction situation

- Highly-intuitive, easy-to-use touch-screen control
- Customizable test sequences
- Easy data transfer from lensmeter to streamline exam
- Compare prescriptions in 2 clicks to speed final check
- Quiet and high-speed rotation disk for optimal patient comfort



CHART SYSTEMS

> Projectors and screens to complete your visual assessment

CP 550

- 50 charts - Type A or B optotypes
- Fast, quiet disk rotation
- Long-lasting LED light illumination
- Projection distance: 2 to 7m



CS 550

- 19" LCD screen with Red and Green charts
- Contrast and color tests
- Customizable slideshow
- Easy connection to APH 550
- Very intuitive menu
- Remote Control with integrated panel
- Projection distance: 2 to 6m



CS POLA 600

- 24" Polarized LCD screen
- Comprehensive range of tests
- Customizable slideshow
- Wireless connection
- Easy connection to the APH 550
- Remote control with integrated panel
- Projection distance: 2 to 8m



Brilliant images and simple to operate

SL 300 / SL 400 SLIT LAMP

> Compacity and ergonomy

- Galilean binocular optical system
- Compact model Zeiss type
- Easy selection of magnification by rotating drum
- Continuous adjustment of slit aperture
- Standard filters: thermal safety, colbalt blue and green (red-free)
- Halogen or LED illumination source
- Easy installation with integrated metal plate

Range of filters



Magnifications

10x 16x 25x SL 300

6x 10x 16x 25x 40x SL 400



■ SL 300



■ SL 400

SL 350 / SL 450 SLIT LAMP

> All the essentials for eye exam

- Galilean binocular optical system
- Tilt tower up to 20°
- Easy selection of magnification by rotating drum
- Continuous adjustment of slit aperture
- Standard filters: thermal safety, cobalt blue and green (red-free)
- Halogen or LED illumination source
- Easy installation with integrated metal plate

Range of filters



Magnifications

10x 16x 25x SL 350

6x 10x 16x 25x 40x SL 450



■ SL 350



■ SL 450

SL 500L DIGITAL SLIT LAMP

› Designed to offer high performance in contact lens fitting

- High-quality optics and cutting-edge LED illumination
- 5 magnification levels
- Standard filters: cobalt blue, green, red
- Integrated yellow filter and background illumination
- HD Digital camera DS 550 (optional)



SL 550L DIGITAL SLIT LAMP

› The professionals' solution for complete examinations of the anterior eye structure

- High-quality optics and cutting-edge LED illumination
- Five magnification levels
- Many slit adjustments and light tilting features
- Wide range of filters: cobalt blue, green, red, neutral density
- Integrated yellow filter and background illumination
- HD Digital camera DS 550 (optional)

Range of filters

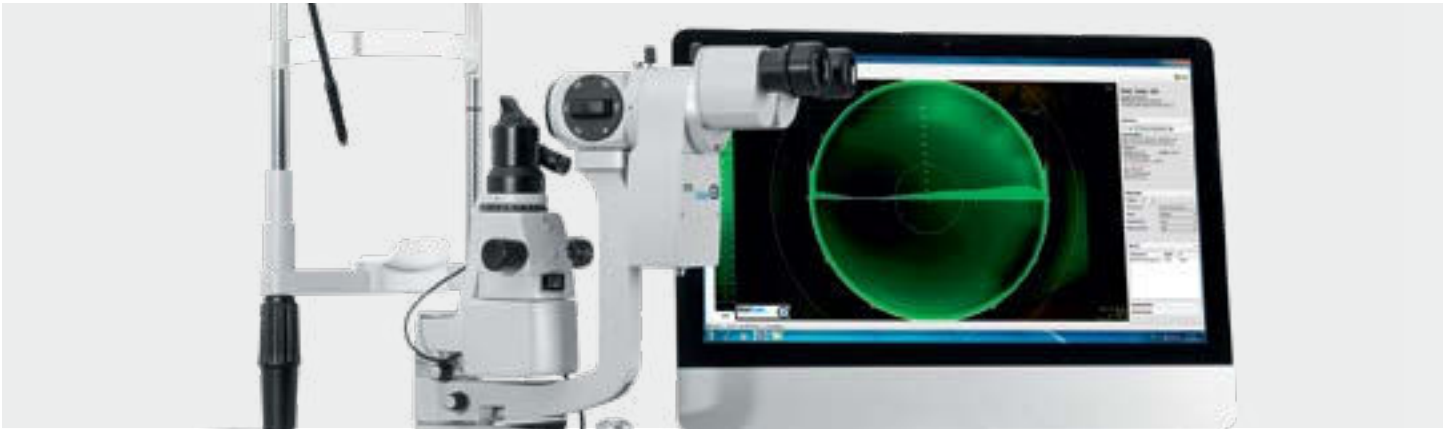


Magnifications



SL 500L / SL 550L





DS 550 DIGITAL CAMERA

➤ Easy-to-use tool for the capture and processing of eye images for analysis and documentation

- Compatible with SL 500 and SL 550
- High performance 2 M pixels sensor
- Plug and play installation (USB 3.0)
- Intuitive AnaEyes Software including basic measurement, annotation and archiving
- Export of various digital files formats



SLIT LAMP SPECIFICATIONS

	TYPE		Magnification	Light tilting	Camera option	ILLUMINATION	
	Zeiss	Haag-streit				LED	Halogen
SL 300	•		10X, 16X, 25X			SL 300 L	SL 300 H
SL 350		•		•		SL 350 L	SL 350 H
SL 400	•		6X, 10X, 16X, 25X, 40X			SL 400 L	SL 400 H
SL 450		•		•		SL 450 L	SL 450 H
SL 500	•		6X, 10X, 16X, 25X, 40X		•	SL 500 L	
SL 550		•		•	•	SL 550 L	

Modularity to fit every practice set-up

1800 CB

> Compact refraction unit ideal for small space

- Very compact and elegant combo
- Fully counterbalanced slit lamp arm
- Comfortable upper phoropter arm
- Three rechargeable wells
- Halogen light
 - Console features for better controls:
 - Up / down for chair
 - BIO power source control
 - Overhead light with rheostat
 - Main power on / off switching



■ Halogen lamp



■ Slit lamp arm



■ Phoropter arm



2000 ST

› The benchmark for high-comfort daily use

- This stand can be used with 1800CH, 2000CH or 2500CH
- Robust and ergonomic features
- Lock / release mechanism for slit lamp arm
- Counterbalanced phoropter arm
- Halogen light
 - Three rechargeable wells with instrument console:
 - Up / down for chair
 - BIO power source control
 - Overhead light with rheostat
 - Power on / off switching
- Reversible configuration (Left / right positioning)
- Wheelchair accessible optional



■ Ergonomic control panel



Flexibility, reliability and comfort for your patients

■ 1800 CH

- Manual recline chair
- Recline up to 170°
- Strong and silent power lift system (560 lbs)
- Improved headrest design
- Robust footrest and flexible armrest
- External pedal to monitor the up and down movement



■ 2000 CH

- Smart cradle tilt chair
- Effortless tilt recline system
- Easy 1 handed release for patient positioning
- Strong and silent power lift system (560 lbs)
- Improved headrest design
- Robust footrest and flexible armrest
- External pedal to monitor the up & down movement



■ 2500 CH

- Full motorized recline chair
- User-friendly control panel for chair movement
- Extend from Seated to 180° position
- Memory functions
- Strong and silent power lift system (560 lbs)
- Improved headrest design
- Robust footrest and flexible armrest
- External pedal to monitor the up & down movement



■ 1000 CHAIR GLIDE

➤ It will move back 27 inches with very little effort allowing the space required to roll in a wheelchair.

- Stainless steel base
- Works on any floor surface
- Heavy-duty stop mechanism
- Steel carriage
- Steel rollers



■ 1500 CHAIR MOVER

➤ Designed as a lower cost option and for rooms that are really quite small. Using this method, the chair needs to be unplugged from the stand and can be rolled out of the way, even across the room in front. This will accommodate rooms where the space does not allow a glide installation.

EXAMINATION TABLES AND STOOLS

> Ideal solutions to complete your practice installation

■ TAB 1000

- Motorized table for 1 instrument
- Table size: 20" x 20"
- Maximum load: 265 lbs
- Min Height: 27"
- Max Height: 35.5"
- Compact column base with wheels



■ TAB 2000

- Motorized table for 2 instruments
- Table size: 20" x 32"
- Maximum load: 265 lbs
- Min Height: 27"
- Max Height: 35.5"
- Compact Column base with wheels



■ TAB 3000 / TAB 3500

- Motorized table for 3 instruments
- Table size:
 - 20" x 42" Rectangular shape
 - 24" x 46" Curved shape
- Maximum load: 265 lbs
- Min Height: 27.5"
- Max Height: 36"
- Wheelchair and flexible positioning column with wheels



■ TAB 4000 / TAB 4500

- Motorized table for 4 instruments
- Table size:
 - 20" x 56" Rectangular shape
 - 28" x 57" Curved shape
- Maximum load: 265 lbs
- Min Height: 27.5"
- Max Height: 36"
- Wheelchair and flexible positioning column with wheels



■ TAM 3000

- Smooth silent movement
- Wheelchair accessible
- Clean, stylish design
- Powerful lift mechanism



■ ST 100

- Five-leg base for overall support
- Maximum comfort with 4" poly-foam seat cushion
- 15" wide seat cushion



■ ST 200

- Five-leg base for overall support
- Maximum comfort with 4" poly-foam seat cushion
- 15" wide seat cushion
- Backrest



STANDARD EXAM LANE SET

> The Essentials for your need

Standard Exam Lane Package combines all of the basic equipment for a classic examination lane. Perfect for new businesses, the Standard Exam Lane provides you with the affordable tools you need.



■ COMBO 1800 CB



■ SLIT LAMP SL 350



■ MANUAL PHOROPTER MPH 150



■ CHART SYSTEM CS 550

OPTIONAL ACCESSORIES



YELLOW
FILTERS



TONOMETERS

ADVANCED EXAM LANE SET

> More flexibility and automation for your practice

Advanced Exam Lane Package enables you to focus more on the patient. With increased automation, you can worry less about operating your instruments and focus more on providing quality visual assessments.



■ STAND 2000 ST



■ CHAIR 2000 CH



■ SLIT LAMP SL 450



■ AUTOMATIC PHOROPTER APH 550



■ CHART SYSTEM CS 550

OPTIONAL ACCESSORIES



YELLOW
FILTERS



TONOMETERS

PREMIUM EXAM LANE SET

> Combine innovation, performance and comfort

Premium Exam Lane Package brings together the highest-performance instruments for a thoroughly modern examination lane. Optimize the time in the exam lane by utilizing state of the art technology to quickly and accurately complete visual assessments.



■ STAND 2000 ST



■ CHAIR 2500 CH



■ SLIT LAMP SL 500



■ AUTOMATIC PHOROPTER APH 550



■ CHART SYSTEM CS POLA 600

OPTIONAL ACCESSORIES



DIGITAL CAMERA
DS 550



TONOMETERS

Ideal solution for reliable and repeatable applanation tonometry

DAT 500 T/R/Z TONOMETER

➤ The most common and direct method of assessing intraocular pressure

- Made with precise machined components to stringent quality and to add more reliability and repeatability to an established technique
- The take away T type DAT is fitted to the guide plate on the optical axis for the microscope and illumination unit arm
- The fixed R type is mounted on a post fitted to the microscope optical body
- The Z type DAT fits directly to the optics support arm



■ DAT 500 R



■ DAT 500 T



■ DAT 500 Z



2

Screening and Diagnostic Room

To further enhance your expertise from refraction to deeper-eye diagnostic testing, Essilor is providing you with advanced solutions which make your practice really unique to your customers.

• Auto kerato-refractometers	p 22
• Corneal topographer	p 23
• Wavefront aberrometers	p 24
• Non-contact tonometers	p 26
• Fundus camera	p 28
• Automated perimeter	p 30
• Lensmeters	p 31

Making examinations easy, efficient and comfortable

AKR 550 AUTO KERATO-REFRACTOMETER

> Outstanding refractive measurement with quick and simple operation

- High-accuracy measurement on even small pupils
- Guided alignment that automatically starts measurement when pupil is focused
- Pupil size measurement in scotopic and photopic light conditions
- Screen tilts and swivels for comfort when seated or standing
- Automatic data transfer to APH 550



AKR 750 AUTO KERATO-REFRACTOMETER

>> Fast, accurate and fully automatic: an ideal solution for delegating patient measurement

- One-touch button measuring process for both eyes
- Ultra-precise measurement, for even small-diameter pupils
- Auto and manual measurement modes available
- Wide range of measures including peripheral keratometry with eccentricity
- Large 7.5" tilting screen for easy operation
- Automatic data transfer to APH 550



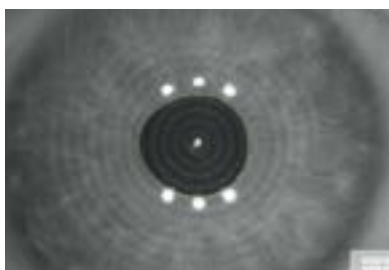
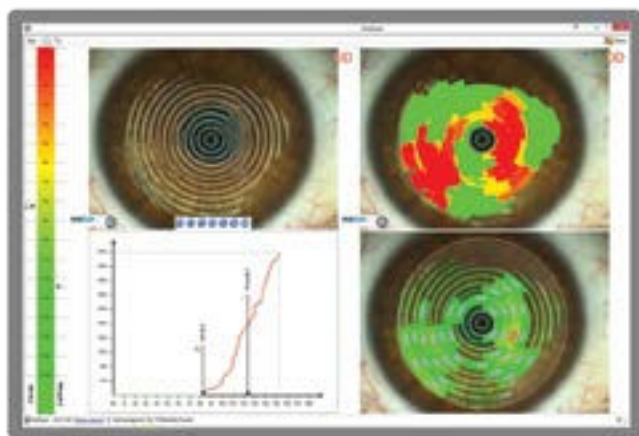
■ Unique “scanning window” with smooth and silent movement to create comfortable and stress-free exam atmosphere



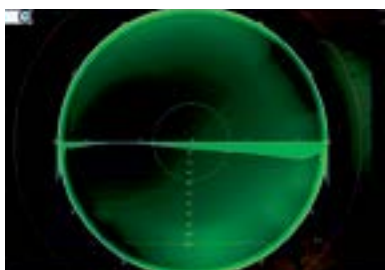
CORNEA 550 CORNEAL TOPOGRAPHY

> Specially designed for contact lens fitting and dry eye analysis

- High-resolution color camera
- Wide array of graphic representations
- Large contact lens database and autofit function
- Advanced qualitative and quantitative tear film assessment
- Dynamic and static capture pupillometry
- Independent screen to facilitate the sharing of results



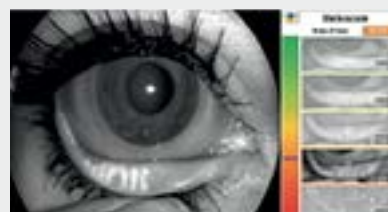
Pupillometry



Autofit function

SIMPLE AND PRECISE TEAR FILM EVALUATION

- Automatic and non invasive tear film break-up time
- Infrared illumination to prevent patient glare
- Easy-to-understand color graphics
- Meibography with color scale enabling evaluation of gland loss



WAVE ANALYZER WAVEFRONT ABERROMETERS

- > Fast and fully automatic:
7-in-1 measurement solution

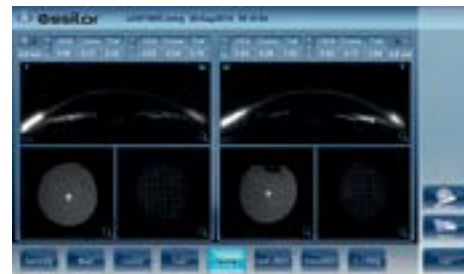
The WAVE ANALYZER is a fast and effective automatic aberrometer that provides seven different detailed measures in one easy-to-use solution.

With wireless connectivity, it facilitates the sharing of results with patients and transfer of data for follow-up monitoring or action.

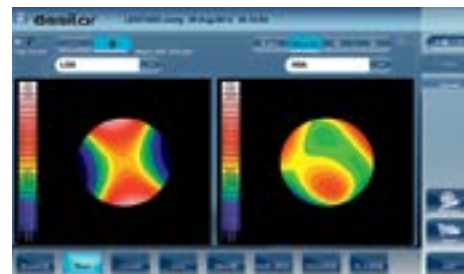
- Based on wavefront and Shack-Hartmann technology
- Large touch screen makes it simple to navigate or follow the progression of measurement cycle
- Easy data sharing with clear and customizable result reports
- Comprehensive measurements:
 - 1/100 diopter refraction for day and night vision
 - Low- and high-order aberration with simulation of vision quality
 - Topography and pupillometry for contact lens fitting and keratoconus detection
 - Retro-illumination of crystalline lens for opacity check and cataract screening
 - Scheimpflug-based pachymetry and tonometry for secured glaucoma screening



■ Visual acuity simulation



■ Retro-illumination



■ Aberration maps



■ Scheimpflug-based image



Exists in 2 versions:

	Aberrometry	Refraction	Keratometry	Topography	Pupillometry	Tonometry	Pachymetry
WAVE ANALYZER MEDICA 700	•	•	•	•	•	•	•
WAVE ANALYZER CORNEA 700	•	•	•	•	•		

High-quality imaging for confident diagnostic testing

ATNC 550 NON-CONTACT TONOMETER

› Comfortable and precise tonometry combining IOP measurement with CCT* data

- Quiet and soft air puff to enhance patient comfort
- IOP value automatically corrected by simply input of central corneal thickness
- Tilting and swiveling screen to facilitate seated or standing operation



*Central Corneal Thickness compensation

REICHERT TONO-PEN AVIA® Handheld Applanation Tonometer

› The most advanced Tono-Pen yet, always ready to use

- No calibration required
- Award-winning ergonomic design
- Simple one-button operation
- Less sensitive to corneal centration
- Technician-friendly
- Can be used in any position
- Large dual-sided screens
- Long-life battery
- ADA eligibility
- Made in the U.S.A.



REichert® 7 Auto Tonometer

> The most user-friendly non-contact tonometer

Reichert 7, Reichert Technologies' seventh-generation non-contact tonometer, is the most user-friendly NCT ever. With a number of new features, including an easy-to-navigate touch screen interface and multiple-measurement mode, Reichert 7 will be a welcome addition to your practice. The totally automated operation results in error-free measurements and high patient throughput. It provides measurement speed and simplicity without sacrificing accuracy.



REichert® 7CR Auto Tonometer + Corneal Response Technology®

> The “Glaucoma Tonometer” with Corneal Response Technology and IOPcc

The Reichert 7CR from Reichert Technologies utilizes a patented bi-directional applanation process to characterize the biomechanical properties of the cornea and reduce their impact on the IOP measurement. This measurement, referred to as Corneal Compensated IOP (IOPcc), is minimally affected by corneal visco-elastic properties, thickness, or surgical procedures such as LASIK or PRK. As such, IOPcc is a better indicator of glaucoma risk than other methods of tonometry, including Goldmann Applanation.

The Reichert 7CR is more clinically valid in all subjects, including: normal tension glaucoma patients, primary open angle glaucoma patients, post-LASIK and refractive surgery patients, patients with Fuchs' or corneal edema, keratoconus patients, and patients with thick, thin, or otherwise biomechanically atypical corneas.



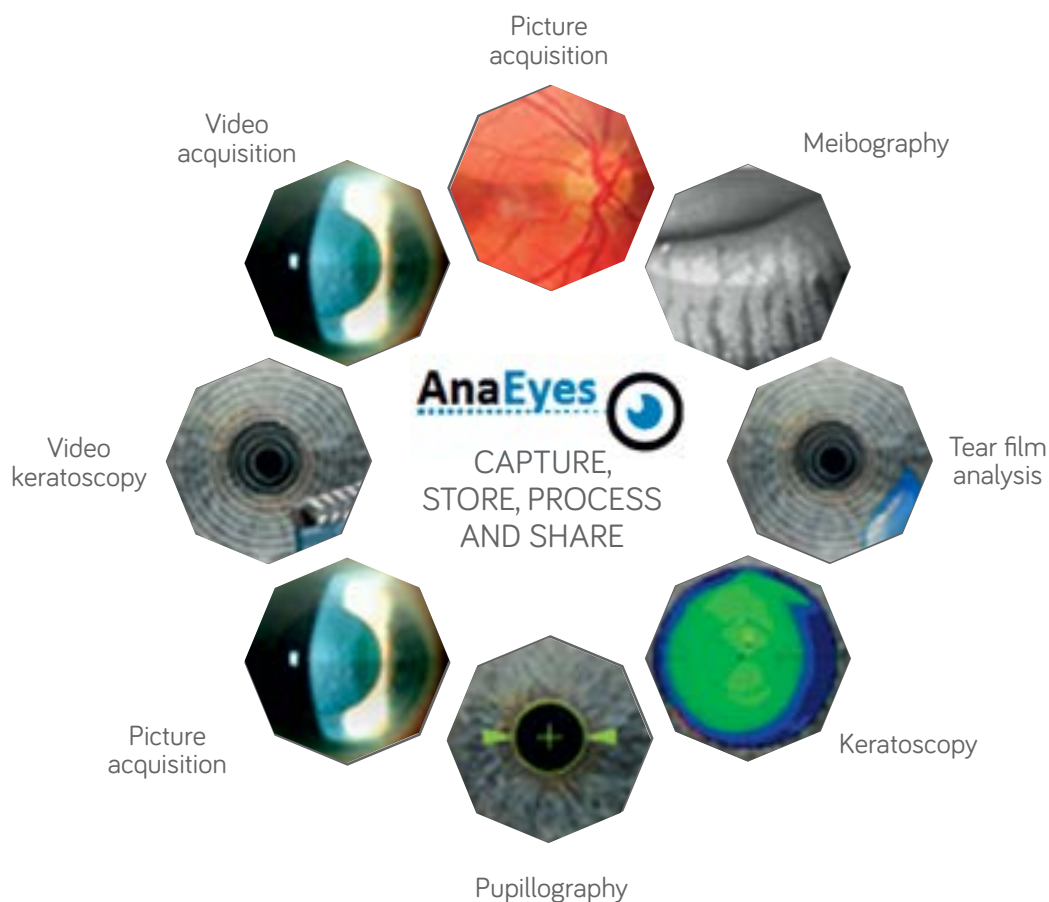
RETINA 400 FUNDUS CAMERA

> Simple and flexible solution for high-definition retinal imagery

- Non-mydriatic retinal camera
- High-resolution sensor and wide field of vision
- Intuitive software including automated operations
- Independent screen to facilitate the sharing of results
- Flexible and adaptable to different practice configurations



■ Wide and high-definition screen to deliver convincing and professional messages



A UNIQUE PLATFORM to capture, store, process and share digital images and deliver PROFESSIONAL DIAGNOSTIC AND ADVICE.

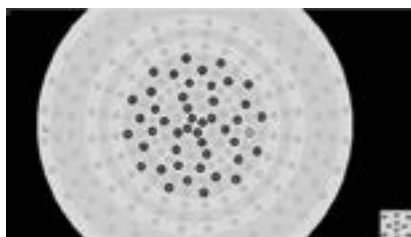
- Wide and high-definition screen to facilitate content sharing
- Easy-to-understand graphics and charts to aid discussions with patients and enhance trust
- Various file formats to document results and demonstrate the consistency of the recommended procedure

The comprehensive tool for PERIMETRY analysis

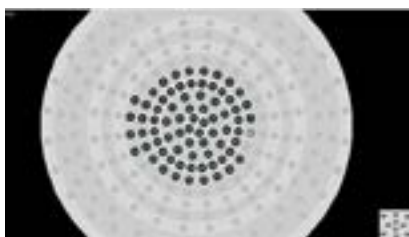
M700 AUTOMATED PERIMETER

> Specially designed for effective and accurate visual field assessment

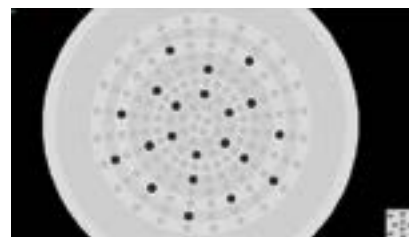
- Wide field coverage to 160 degrees allowing complete peripheral detection
- Full-size bowl to overcome claustrophobic feeling
- Perfect adaptive technology to add customized points
- Easy graphic representations to enhance your expertise
- Perfect tool to monitor patient's visual progression
- Able to be used by office staff



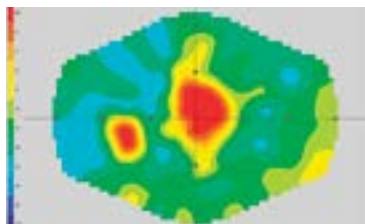
■ Central test



■ Flicker test



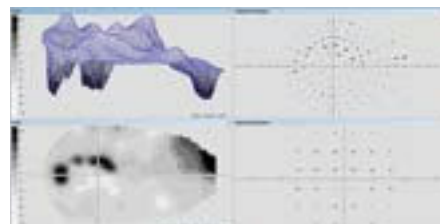
■ Binocular test



■ Color mapping Central test



■ Patient progression report



■ Glaucoma test combination view

MLM200US Manual Lensmeter

> Outer-reading lensmeter handmade to the highest standards

- Superior-quality optics
- LED light source
- Prism compensation
- User-friendly design
- Large ergonomic knobs clearly marked for ease of use



ALM 500 AUTOLENSMETER

> Measurement of all types of lenses and frames

- Measurement technology using the green light beam
- Lens support adapted to all lenses and frames cambers
- Ergonomic design with titling color screen
- Built-in printer
- Data transfer to automatic phoropter



■ Lens support adapted to all lenses and frame curves



ALM 700 AUTOLENSMETER

> Intuitive and practical autolensmeter for rapid and accurate measurement

- Measurement technology using the green light beam
- Lens support adapted to all lens and frame curves
- Measurement of UV transmission
- Measurement of inter-pupillary distance
- Ergonomic design with titling color screen
- Data transfer to automatic phoropter



■ PD measurement

■ UV transmission





3

Lens Finishing Systems

Provide best-in-class technologies for your workshop.

As you are dedicated to provide the best products and services to your patients, Essilor Instruments is committed to developing the best-in-class technologies to secure accurate, aesthetic and perfectly-fitted mounting.

Our systems give access to different levels of finishing, speed, range of shapes, and automatisms. They have also been designed to be networked to answer different workshop organizations and secure in-practice data exchanges.

Our finishing offering ranges from Delta 2, our affordable entry-level equipment, to the latest version of the trusted Kappa edger to Mr. Blue and Mr. Orange edging systems.

- | | |
|---------------|------|
| • Mr. Blue | p 34 |
| • Mr. Orange | p 36 |
| • Neksia | p 38 |
| • Delta2 | p 40 |
| • Pro-E 600 | p 42 |
| • Tess family | p 44 |
| • Essibox | p 45 |

Give your talent the tools it deserves

MR. BLUE® 2.0 LENS EDGING SYSTEM

> Complete control of your lens mounting and much more

Mr. Blue is on the cutting edge of innovation—serving as a genuine ECP partner since its launch.

Now featuring a whole range of new functions and even greater flexibility than before, Mr. Blue 2.0 is the perfect solution for:

- Working with cutting edge technology,
- Differentiating your offerings,
- Optimizing your edging process.



High-precision lenses deserve cutting edge tools.

WITH MR. BLUE® 2.0, YOU HAVE COMPLETE CONTROL OF LENS MOUNTING...

- Optimal monitoring of all trajectories, irrespective of finishing, materials or shapes.
- Absolute axis control thanks to hybrid edging technology: grinding + milling.
- Ideally suited for quality finishing even on highest base curves.
- Fast and accurate drilling with data acquired in a single operation.
- Automatic centering and blocking for simple operation.

...AND UNRIVALED ERGONOMICS.

- Completely integrated functions without external peripheral devices.
- Vertical architecture with «Heads-up display» for optimum comfort.
- Storage features ensure all accessories are within reach.
- Intelligent interface adapts to the way you work.



**HIGH-CURVE MOUNTING JOBS OF THE HIGHEST QUALITY GUARANTEED,
GIVING YOU COMPLETE PEACE OF MIND.**

1 PERFECT CENTERING.

- Binocular 3-D tracing of full-rim frames up to base 9*.
- Automatic adjustment of centering data based on the frame's 3-D parameters*.

+

2 AESTHETIC AND ROBUST MOUNTINGS IN ALL FINISHES.

- FIT-4-Frame technology with dedicated small wheel*.
- Drilling and grooving tools can be tilted up to 30°, making it safe to mount lenses of up to base 10.

+

3 SAFE PROCESS.

- Roughing cycle automatically adapts to the curves of lenses up to base 10, avoiding all risk of breakage.
- Bevel placement and shelf depth optimized for safe mounting without undue stress on lens.

=

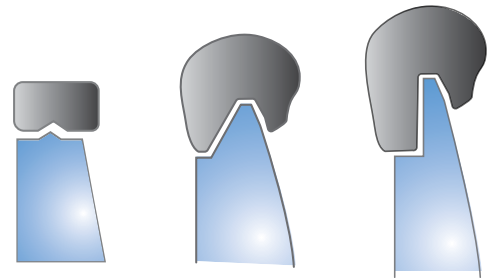


* Essilor patents and exclusives.

FIT-4-FRAME 2.0 TECHNOLOGY FOR AESTHETICALLY PLEASING AND EASY-TO-MOUNT BEVELS.

A wide range of bevels to suit every groove profile.

- The bevel heights are adjustable to perfectly adjust to the thinnest as thicker grooves.
- The shelf bevel heights are optimized to follow the frame's shape precisely.
- The step bevel is particularly suited for sport eyeglasses with deep, rectangular or uneven groove profile.



■ Mini-bevel

■ Shelf or asymmetric bevel

■ Step bevel

Take your store even further with Mr. Blue® 2.0 !

SPECIALIST FUNCTIONS THAT HELP SET YOUR STORE APART FROM THE COMPETITION...

- Mr. Blue 2.0 will help you get the most out of your workshop's expertise more than any other chain.
- An elegant design to fit into your sales areas.
- Unrivalled performance so you can fulfill all requests without compromising on quality.
- New opportunities to customize glasses with M'EYE Sign (see Page 46).



Personalized Engraving

A SINGLE SIGNATURE FOR YOUR CUSTOMERS AND YOUR STORE

- Customize your lenses and energize your profit
- An easy to use function that is completely integrated to Mr Blue 2.0.
- Infinite range of images.
- Promotional tools for the dispensing.
- Differentiate your practice with a unique offer



A perfectly balanced concentrate of technology

MR. ORANGE LENS EDGING SYSTEM

>> From tracing to finishing, Mr. Orange raises the standard of efficiency

Thanks to its perfect balance of speed and performance, Mr. Orange sets a simple and accessible standard for even the most difficult jobs. Whatever the finish or curvature of the lens, its wide array of functions guarantees top quality results.



Enjoy total command of all your jobs.

- 30° tool inclination: combined with lens geometry analysis, this range of movement provides outstanding results for all lens finishes (grooving, drilling, bevelling) and base curves.
- Fit-4-Frame technology: Variable geometry bevel with a dedicated chamfering wheel for shelf-beveling and fitting lenses in every form of groove regardless of the frame base.



LENSES ARE DESIGNED TO CHANGE, SO IS MR. ORANGE.

- Star control process: especially for hydrophobic treated lenses, this cycle offers outstanding control of the lens integrity (centering, edging, treatment resistance), irrespective of the material, shape and finish.
- Real-time control of cutting forces offers the best execution time/performance ratio.
- Customized finishes: customization of the finish parameters offers an irreproachable results and guarantees a perfect fit under all circumstances.



ITS LEVEL OF TRACING IS SO HIGH THAT IT CAN ALREADY READ THE FUTURE.

- Binocular tracing in 3 dimensions up to base 9.
- Feeler profile and inclination* designed to follow even the most complex grooves.
- Mechanical design recognized for its precision and regularity.



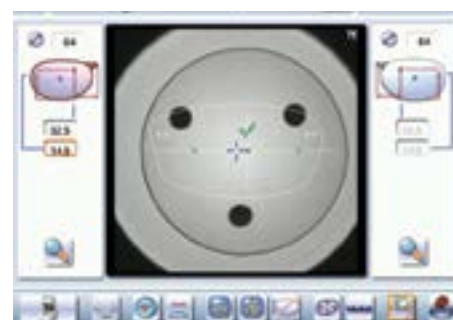
EFFICIENCY BASED ON COMFORT.

- Centering space designed for all lens geometries: curved, large diameter and recut lenses.
- Hand rest and front loading blocking arm designed for ambidextrous use.
- Soft touch finish of the centering range for work comfort and more accuracy.



PRECISE CENTERING STRAIGHT TO THE GOAL.

- Centering aid: real-time orientation and validation of the best centering position.
- Centering free from all prismatic effects, irrespective of the lens power.
- Automatic adjustment of decentrations depending on the frame parameters (curve angle, base and pantoscopic tilt) and on the wearer data.



IT EVEN TRACES BETWEEN THE LINES AND STORES EVERYTHING TWICE AS FAST.

- Simultaneous acquisition of the shape and drilling data.
- Direct tracing without handling the lens or any accessories.
- Simple, easy access to the shape and drilling libraries.

*Essilor patent.



Everything you need to race through your workload

NEKSIA LENS EDGING SYSTEM

> The simple and reliable edging solution for my daily workflow. The latest generation of Kappa.

With Neksia™, Essilor combines years of experience in high-performance and precision edging into one of the most user-friendly and productive systems in the world.



Work more easily

A TOUCH OF EFFICIENCY

The 8.4-inch color touch-screen display makes navigation a breeze.

And you can select the icon-based functions quickly and easily with just the touch of a finger.

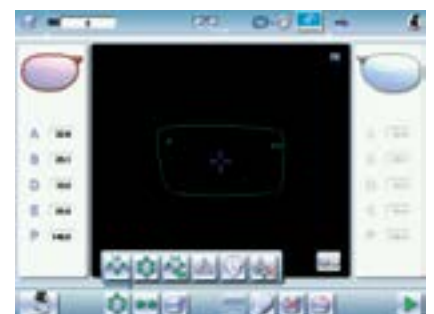
FAST-ACCESS SETTINGS

With all job settings located conveniently on the centering part of the system, you can define your finishing settings quickly and launch edging jobs in just a few clicks.

If necessary, you can still adjust settings after the feeler measurement.

A USER-FRIENDLY 1,000-POSITION JOB DATABASE

Save precious time by easily accessing or storing complete jobs in the database, via the touch screen or optional barcode reader.



Experience workflow efficiency

FAST, EASY AND EXTENDED FRAME TRACING

Equipped with auto frame-type selection, simple clamping and rapid tracing cycles, NEKSIA™ helps you trace any type of frame effortlessly, including children frames, small B-size and large A-size frames.

AUTOMATIC DRILLING-HOLE RECOGNITION

Achieve even greater productivity thanks to optional features dedicated to automatic detection of drilling holes and flat bevel shapes.

CONVENIENT CENTERING AND BLOCKING

NEKSIA™ arms you with valuable features that make centering and blocking straightforward and precise:

- Handle lenses easily with the wide-open centering area
- Increase precision with intelligent targeting and parallax-free working
- Benefit from the intuitive on-screen interface



Achieve high performance

IMPROVED AXIS ACCURACY

By combining new edging cycle algorithms and cutting-force regulation, you're guaranteed optimal results whatever the edging situation:

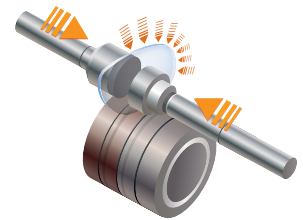
- Optimized edging speed according to the lens material, shape and lens thickness guarantees fast cycle times, lens positioning and alignment.
- The New Edging Assisted System (EAS) cycle avoids axis deviation on new generation hydrophobic lenses, rectangular shapes or fragile lenses.

BEST AUTOMATIC CYCLES

For 90% of your jobs, all it takes are a few clicks to achieve a perfectly calculated bevel, groove or drilling cycle. The lens is well positioned for an aesthetic and perfectly fitted result, no matter the material or frame type.

CONSISTENTLY INTELLIGENT CHAMFERING

With NEKSIA's patented flexible chamfering wheel, the pressure applied to the wheel adapts seamlessly to the lens edge depending on the shape and curve of the lens.



We reinvent simplicity for you

DELTA2™ LENS EDGING SYSTEM

> The compact edging system to work more comfort, speed, precision and versatility

Do you lack space or have budget constraints?
Are you looking for solutions that are simple,
user-friendly and more intuitive ? Do you need
to increase productivity while you maintain
compatibility with mechanical tracers ?



Profit from a compact, high-performance system that covers **all the essentials**

- Has all necessary functions for tracing, centering, blocking and edging.
- Traces all types of lenses including demo lenses, re-cut lenses and patterns - irrespective of the lens color and the lens power.
- Centers and blocks all kind of corrective lenses including re-cut lenses.
- Edges all types of materials up to base 6 including hydrophobic lenses.
- Exists in three configurations to fit your daily needs.



Manage all tasks using a new all-in-one high-performance display

All functions traditionally performed by 2 or 3 instruments (Tracer, Center/Blocker, Edger) are now on one single display that provides two comfortable ergonomic improvements:

- Natural posture reducing muscular stress
- No need to move from one piece of equipment to another



Do two things at the same time

Thanks to its fully parallel workflow, you'll be able to prepare a new job while edging a lens at the very same time without any restriction.

TAKE ADVANTAGE OF THE PRECISION AND SPEED OF THE OPTICAL SHAPE TRACING

Its new "Place and Trace 3D technology" allows you to trace any shape in a few seconds, ensuring extreme precision of the lens contours in 3D with the Optical Shape Tracing technology (OST).



STREAMLINE YOUR MOVEMENTS

Its patented innovative centering/blocking system introduces a natural and smooth flow of movements, greatly reducing the number of operations.



GET QUICKLY UP TO SPEED WITH STEP-BY-STEP VIDEO

The Delta2™ video-assisted job preparation process ensures a precise and parallax-free lens centering. The selective zoom function guarantees a perfect visualization of the lens.



Edge ahead without compromise

PRO-E 600™ Edger

> The smart and unique solution for every forward-thinking lab manager.

Are you managing high volumes and looking to move your productivity up a gear? Essilor has designed an innovative high-volume edger that offers compactness and productivity, without any compromise. Pro-E 600 edger combines top-end precision and versatility with robustness and speed. It offers an easy and cost-effective integration into any lab configuration.



Integrate **quickly**
and use instantly



This compact edger fits right into every lab. It sits on the table top and requires no vacuum or compressed air, meaning no extra investment. Its intuitive, user-friendly interface, even for complex jobs, makes it immediately operational. It interfaces easily with laboratory management software (ISO 16284), and is connectible to Essilor tracer-blockers and Essibox®.



Boost your **productivity**



Pro-ETM 600 edger is specifically designed for volumes. It raises the productivity standards of its category using whole new processes in all its cycles. Pro-ETM 600 edger combines value for money with high volumes of quality mountings.



Do it all - even the most **complex** jobs



Maximize your offer thanks to this edger that can process all jobs efficiently, even the most complex, including high curve, sport, safety, children's shapes and small B-size.

Bevel, mini-bevel, asymmetric and step bevel, groove, mix finishes, drill, chamfer and polish — Pro-ETM 600 edger can do it all.



Maintain with **ease**



Eighteen months of field testing and engineering have delivered a highly robust solution. Long-life components and fast maintenance procedures maximize the edger's up-time, making Pro-ETM 600 edger a smart investment for all volume labs.



Get it **right** first time



The Pro-E 600 edger meets the highest market standards in top-end precision, optimizing right-first-time rapid results in faultless sizing, axis control and aesthetic mountings. It combines the benefits of two lens edging techniques: quality finishing by abrasive wheels and scoring precision of milling with an innovative fast process. The best way to reduce rework and ultimately generate great customer satisfaction.

Because a perfect job starts with a perfect tracing

TESS® FAMILY LENS EDGING SYSTEM

> For every need there is a specific TESS Tracer

Exceed all your expectations for remote edging



EVERYTHING YOU NEED FROM A PERFECT TRACER

Binocular tracing of all shapes, even the most intricate and high curved.

- Optimal rim contact without frame deformation ensured by patented, tilted stylus.
- Tracing cycle adaptable to frame shape and thickness, with auto-recognition of the frame material.
- High accuracy trace data optimized for remote ordering and remote edging.
- Robust design. Long term stability for low frequency of calibration.
- OMA protocol compatibility — Easy integration in an Essibox network.
- 200 integrated shapes memory.
- Optional barcode reader.



A TOUCH SCREEN FOR EASE OF USE

In addition to the performances of Tess tracer, E-Tess model offers even more:

- 1:1 scale shape display to easily validate scanned shapes.
- A large set of shape modifications: B and ½ B dimensions, A and ½ A dimensions and scaling.
- 1,000 shapes internal memory storage.



Your daily partner for productivity



MORE COMFORT AT A MORE INTENSIVE RATE

In addition to the performances of E-Tess tracer, L-Tess version offers:

- User comfort optimized for natural position of the neck and back: raised tilted touch screen.
- Durability: increased robustness of motors for higher production.



CHOOSE YOUR TESS® TRACER

	High Precision	Shape Memory	Connectivity	High curved shapes	Shape Modification	User Comfort	High Production
TESS		200	OMA				
E-TESS		1000	OMA				
L-TESS		1000	OMA				

ESSIBOX

> Make your workday easier

Transferring information among a variety of systems in your practice is often fragmented and complicated. Essibox is an office network control system designed to save time and simplify the way you work by eliminating multiple data entries and connecting all of your tools.

- Enter data once and only once
- Seamless integration with your organization
- Easy job management
- Create unlimited shapes and drilling patterns
- Peace of mind through remote maintenance





4

Dispensing Equipment

Essilor Instruments provides equipment and solutions for precise measurements in the dispensing process. From the lens fitting to the frame fitting parameters, the perfect measures provide for the perfect fit.

- Pupillometer p 48
- Essilor Ditest p 48
- Pal-ID engraving identifier p 48
- Frame warmer p 49
- Ultrasonic cleaners p 49
- Hand edgers p 50
- Tensiscopes p 51
- Dispensing essentials Kit p 51

DISPENSING EQUIPMENT

➤ Get equipped like Essilor Laboratories and partner companies with equipment of the highest quality that will meet your daily expectations

■ PUPILLOMETER

PRECISION MEASUREMENTS WITH MANUAL CONTROL

- Precision measurements with manual control
- Digital read-out with measurements to 0.5 mm
- Monocular and binocular measurements
- Manual occluder
- Manual adjustment of unlimited vision distances, from 35 cm to infinity
- Automatic on/off



■ X81705

■ ESSILOR DITEST

MINIMAL LENS DIAMETER DETERMINED WITH HIGH PRECISION

- It allows the minimum lens diameter to be determined during initial dispensing and final checking after finishing
- Delivered with cards covering most Essilor lens types



■ N73700

■ PAL-ID ENGRAVING IDENTIFIER

FAST AND EFFORTLESS IDENTIFICATION OF ALL SURFACE MARKINGS

- Features an exclusive patented optical imaging system designed to illuminate, enlarge and enhance even the faintest engravings on PALs.
- Possible for even the least experienced operator to locate and accurately identify markings in a matter of seconds.



■ PAL-ID

■ FRAME WARMER

ELECTRONIC HEATING REGULATION FOR EASY FRAME ADJUSTMENTS

- 2 levels of temperature: 65/90°C and 130/170°C
- Cooling function
- Large platform allowing perfect frame heat position
- Homogeneous temperature in the working area
- Delivered with hot air concentrator



■ FHE310

■ STAINLESS STEEL ULTRASONIC CLEANER

LARGE AND POWERFUL FOR A MINI-LAB

- 2,000 ml tank will fit any size eyewear
- Stainless steel construction and industrial parts will provide years of quality service
- Ultrasonic frequency: 45,000 Hz
- Quiet, solid-state circuitry



■ MNU2000

■ DIGITAL ULTRASONIC CLEANER

COMBINATION OF THE IDEAL SIZE AND POWER

- Includes a removable lid, bright digital display, and timer
- Ultrasonic frequency: 42,000 Hz
- Tank material: Stainless steel SUS303
- Tank capacity: 1,375 ml (1.48 quarts)
- Quiet, solid state circuitry



■ MNU1375

■ DISPENSING EQUIPMENT

■ HIDE-A-BEVEL HAND EDGER

NEW DESIGN TO PROVIDE YOU WITH YEARS OF HASSLE-FREE USE

- Features a diamond wheel with 3 cutting surfaces:
 - 100 grit
 - 240 grit
 - V-Groove
- Large water reservoir and swarf collector
- Vibration-free operation
- Ergonomically designed
- Clear safety shield



■ MMWHABHE

■ DIAFINE HAND EDGER

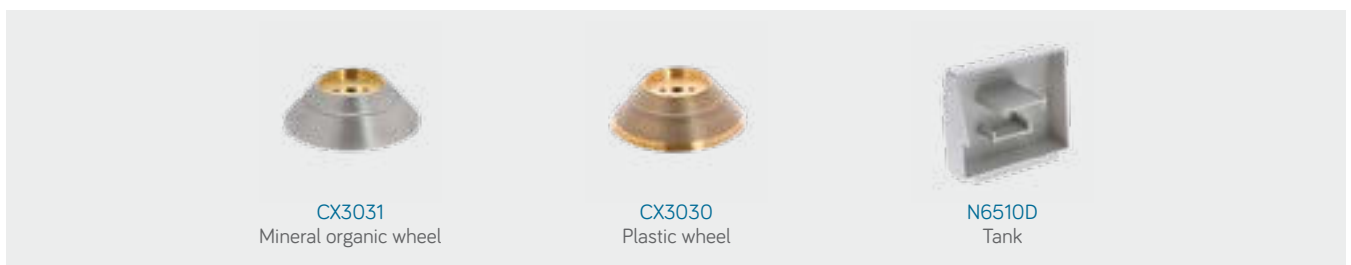
A RANGE OF MANUAL EDGERS FOR CHAMFERING AND POLISHING

- Chamfering and polishing for polycarbonate and plastic beveled lenses
- Chamfering for glass lenses
- Conical diamond wheels from 50 to 90 mm. in diameter
- Two 14 mm wide strips for chamfering and counter-beveling at the best possible angle
- Retouching mini bevels with either the left or right side of the wheel
- Fine beveling of a thin lens can be carried out on the upper part of the wheel
- Continuously lubricated by a film of water which eliminates any risk of splashing
- Built-in water container eliminates the need for connecting the edger to the water supply



■ N65806

■ ACCESSORIES



■ TENSISCOPE

- This tensiscope with tiltable feet makes it possible to identify tensions or stress on mounted lenses.
- If wrongly applied, such stress can cause distortion and, in glass lenses, chips.
- Tension is always applied when mounting a lens, any excessive tensioning shown by the tensiometer must be eliminated.



■ TEN070

■ HAND TENSISCOPE

- Ultra compact and portable tensiscope for checking stress on mounted lenses



■ TEN100

DISPENSING ESSENTIALS KIT

DISPESSKIT1

Frame Warmer	FHE310
Pupillometer	X81705
Ultrasonic Cleaner	MNU1375
Lens Engraving Detector	PAL-ID
Manual Lensmeter	MLM200US



5

Vision Screeners and Tests

For over 60 years, Stereo Optical has designed and manufactured the gold standard of vision screening products with trusted use and validation. The vision screeners provide quick, accurate and reliable results in a controlled environment with no training or certification necessary. The tests are a quick, easy method to identify vision problems.

- OPTEC PLUS p 54
- OPTEC 5000 Series p 55
- Functional Vision Analyzer p 56
- Stereotests and Vision Products p 57

Perform comprehensive visual screening in minimal time

OPTEC PLUS SMART VISION SCREENER

- Your practice deserves a new generation of vision screening devices

Stereo Optical OPTEC PLUS all in-one digital vision screener enables quick, thorough and repeatable results in the pre-test room, saving valuable time in the exam lane.

New features include a user-friendly interface, an expanded library of tests with limitless customization including auto-mode, randomization and protocols.

- Testing distances: Near, Far and intermediate
- Monocular and Binocular
- Lighting conditions: day / night (optional)
- Constant and homogeneous luminance levels with controlled lighting in accordance with the international standard
- No training or certification
- Lightweight and portable
- PC or Tablet
- New software available with the glare recovery test and testing under the glare condition

AUTOMATIC MODE*: INCREASE THE EFFICIENCY OF YOUR PATIENT FLOW AND SAVE TIME IN THE EXAM LANE

- With this unique feature, tests can be:
 - Self-administered by the patient or
 - Delegated to your staff
- Text-to-speech technology guides patient through the test, freeing you from repetitive tasks
- Preset auto-mode protocols
- The OPTEC PLUS records the patient results for you.



* Patent Pending

OPTEC 5000 SERIES VISION SCREENERS

> Ideal for pre-screening, to quickly and accurately test patients in a controlled environment

- Near, far and intermediate testing distances
- 100+ test slides to choose from acuities, color, depth and phoria
- No training required
- Lightweight and portable



■ OPTEC 5000 (P)
manual control and optional
peripheral



■ OPTEC 5500 (P)
with remote control and optional
peripheral

FUNCTIONAL VISION ANALYZER

> Ideal for pre- and post-op cataract, refractive surgery and clinical trials

- Includes contrast sensitivity tests (sine wave gratings)
- 4 lighting conditions - Day and night, with and without glare
- Meets ANSI standards with unsurpassed homogeneous illumination
- Optional software to illustrate real-world image of patient results



STEREOTESTS

Stereo depth perception tests are an effective and easy to use method of screening stereoscopic vision for all ages. They help to detect visual problems such as stereopsis, amblyopia, suppression and strabismus.



ORIGINAL ISHIHARA COLOR TEST

- For congenital red-green color blindness
- Color plates encased in a specially designed album book
- Each Ishihara plate is printed with a circle made of different sized dots of slightly different colors, spread in random, with the image of a numeral at the center
- Three options available: 14-plate book, 24-plate book, 38-plate book
- Additional tests discourage memorization but do not provide additional testing.

Original Stereo Fly	SO001
Randot®	SO002
Random Dot "E"	SO003
Butterfly	SO005
Original Randot	SO006
Randot Preschool	SO007
Distance Randot	SO015
Special Randot	SO016
Color Tests (14-plate)	MAG301
Color Tests (24-plate)	MAG302
Color Tests (38-plate)	MAG303



6

Handheld Instruments

Essilor Instruments offers an extensive line of handheld instruments and binocular indirect ophthalmoscopes designed to facilitate examinations and diagnoses at your practice.

- | | |
|--------------------------------------|------|
| • Ophthalmoscopes | p 60 |
| • Retinoscope | p 60 |
| • Transilluminator | p 61 |
| • Indirect binocular ophthalmoscopes | p 61 |
| • Optometric accessories | p 62 |
| • Exam Lane Essentials Kit | p 63 |

■ OPH 500 Professional Ophthalmoscope

- Ultimate control
- Xenon illumination
- Comprehensive lens range: +29D to -30D
- Included: handle, lithium battery, case, 1 spare bulb



■ OPH 700 Specialist Ophthalmoscope

- The world's finest direct ophthalmoscope
- High-quality illumination
- Widest range: +44D to -45D
- New cobalt-blue filter
- Included: handle, lithium battery, case, 1 spare bulb



■ RET 500 Professional Combi Retinoscope

- The first truly bimodal retinoscope
- Neutralization check
- Two-position aperture
- Included: handle, lithium battery, case, 1 spare bulb



■ TRANSILLUMINATOR

The transilluminator features bright halogen illumination for examining the sclera to detect the presence of ocular tumors and assessment of the anterior chamber and eyelids. This high-quality instrument's fiber optics provide cold light transmission.

The new long-lasting Lithium Battery Handle is rechargeable. Add the Mini Charger, and you also have the ability to plug in to a standard wall outlet for recharging.



■ INDIRECT BINOCULAR OPHTHALMOSCOPE Vantage Plus

> Great new features that really add up!

The PLUS gives you:

- Premium intelligent optics
- Lighter weight and brighter images
- Unique wireless patented technology
- Smaller and more compact size



■ INDIRECT BINOCULAR OPHTHALMOSCOPE All Pupil

> Light, bright and easy to use

All Pupil II is based on the designs of the number one selling All Pupil indirect. Its exceptional brightness (2000 lux), light weight (500 grams), balance, and extra padding all make the All Pupil II the most comfortable indirect. Its enclosed coated optics guaranteeing bright, clear retinal images. A unique single control lever changes aperture size to view through all pupil sizes.



OPTOMETRIC ACCESSORIES

> Enhance your expertise with wider offer

■ Trial frames and trial cases



■ Adaptors for Applanation Tonometers



■ Portable Phoropter Arm



■ Portable Slit Lamp



■ Horizontal Prism Bar



■ Ophthalmic Surface Mirror



■ Prisms



■ Ophthalmic Lenses



■ Accessories



■ Flipper Lens +/- 0.25



■ Occluder Pinhole



EXAM LANE ESSENTIALS KIT OPTOESSKIT1

Volk Lens 20D	VLENS20D
Volk Lens 90D	VLENS90D
Horizontal Prism Bar	HORPB
Occluder Pinhole	OCCLUPINM
Flipper Lens +/- 0.25	FLIPLENS025

Original Stereo Fly	SO001
Color Tests (14-plate)	MAG301
Trial Frame Metal/Standard	ESS204
Small Trial Lens Set 167 pcs	ESS167



7

Accessories and Consumables

Consumables and accessories are key factors to obtaining a mounting that fulfills your customers' requirements. Our pads and blocks will optimize the finishing process of your equipment.

All products are specifically designed, developed and tested by our R&D department to enhance lifetime performance of your Essilor Instruments edging systems.






Get factory-direct quality straight from the source because we are not just a reseller but a manufacturer – expert on finishing and optometry equipment and processes.

- Edging consumables p 66
- Wheels p 68
- Tools p 70
- Services and support p 72
- Product index p 73






EDGING CONSUMABLES

► Obtain perfect mounting with original consumables and accessories specifically designed for your Essilor Instruments edging systems






EDGING PADS

Compatible Equipment	 GAM 403 Ø 22 mm • Roll of 1000	 GAM 316 Ø 18/14 mm • Roll of 1000	 GAM 200 Ø 24 mm • Roll of 1000	 GAM 306 Ø 18 mm • Roll of 1000	 GAM 207 Lens protectors Roll of 2000
GAM 222	•				
GAM 218		•			
GAM 216		•			
GAM 202			•		
GAM 203				•	






EDGING PLASTIC BLOCKS

Compatible Equipment	 GAM 222 Ø 22 mm • Pack of 20	 GAM 218 Ø 18/14 mm • Pack of 20	 GAM 216 Ø 18/14 mm • Pack of 10	 GAM 202 Ø 25 mm • Pack of 20	 GAM 203 Ø 18 mm • Pack of 10
MISTER	•	•			
NEKSIA	•	•			
KAPPA/GAMMA			•	•	•
JESS/DELTA	•	•			
SIGMA			•	•	•

CLAMP PADS

Compatible Equipment	 M24A33 Ø 22 mm	 M1017A Ø 18/14 mm	 N9581D Ø 25 mm	 N9582B Ø 18 mm	 M1012A Ø 18/14 mm
M24A12	•				
M10A17		•			
M10A09			•		
M10A10				•	
M10A11					•









CLAMP PADS WITH PLATE

Compatible Equipment	 M24A12 Ø 22 mm • Right Side	 M10A17 Ø 18/14 mm • Right Side	 M10A09 Ø 25 mm • Right Side	 M10A10 Ø 18/14 mm • Right Side	 M10A11 Ø 18/14 mm • Right Side
MISTER	•	•			
NEKSIA	•	•			
KAPPA/GAMMA			•	•	•
JESS/DELTA	•	•			
SIGMA			•	•	•

BLOCK HOLDERS

Compatible Equipment	 M24A15 Ø 22 mm • Left Side	 M24A16 Ø 18/14 mm • Left Side	 M1590C Ø 25 mm • Left Side	 M1590D Ø 18/14 mm • Left Side	 M1590L Ø 18 mm • Left Side
MISTER	•	•			
NEKSIA	•	•			
KAPPA/GAMMA			•	•	•
JESS/DELTA	•	•			
SIGMA			•	•	•

DRILL/ MILL BITS

Compatible Equipment	 FRA210 Drill bit Ø 1 mm	 FRA211 Drill bit Ø 0.8 mm	 FRA308 Drill bit Ø 0.8 mm	 FRA310 Drill bit Ø 1 mm	 M1553A Drill bit Ø 0.8 mm	 M1554A Drill bit Ø 1 mm	 FRA212 Mill bit Ø 1.2 mm	 FRA312 Mill bit Ø 1.2 mm
MR BLUE 2.0			•	•				•
MR BLUE	•	•					•	
MR ORANGE	•	•	•	•				
NEKSIA/KAPPA JESS/DELTA/ SIGMA					•	•		

FUSE / LED / BULBS



BAR CODE



WHEELS

> Optimize your finishing process with wheels designed and developed by our R&D department

EDGING WHEELS



CX3006
Roughing wheel mineral



CX3045
Roughing wheel plastic



CX3020
Finishing wheel



CX3021
Finishing wheel



CX3060
Polishing wheel 15 mm



CX3061
Polishing wheel 22 mm



CX3028
Polishing wheel 15 mm



CX3029
Polishing wheel 22 mm

DRESSING WHEELS



CX5026
Dressing disc for
roughing mineral



CX5051
Dressing disc for
finishing - 19 mm



CX5024
Dressing wheel for
finishing - 22 mm



CX5032
Dressing stick
15 mm



CX5054
Dressing square
15 mm



CX5049
Dressing square
22 mm

	MISTER BLUE	MISTER ORANGE	NEKSIA/KAPPA/GAMMA/JESS/DELTA/SIGMA
CX5026	• (CX3006)	• (CX3006)	• (CX3006)
CX5051	• (CX3021)		
CX5024		• (CX3021)	• (CX3024)
CX5054	• (CX3060)	• (CX3060)	• (CX3060)
CX3049			• (CX3061)

■ CHAMFERING WHEELS



CX3822S
MR BLUE



CX3823
MR ORANGE



CX3815
NEKSIA / KAPPA / GAMMA /
JESS / DELTA / SIGMA

■ GROOVING WHEELS



CX3820
MR BLUE



CX3824
MR ORANGE



CX3812
NEKSIA / KAPPA / GAMMA /
JESS / DELTA / SIGMA

■ HIGH CURVE WHEELS



CX3821
MR BLUE



CX3825
MR ORANGE



M24STP1
Step bevel kit MR BLUE

				MR BLUE	MR ORANGE	KAPPA/GAM- MA	NEKSIA/JESS/ DELTA/SIGMA
CX3006	Roughing	Mineral	15 mm		•	•	
CX3045	Roughing	Plastic	22 mm		•	•	
CX3020	Finishing	All material	22 mm	•		•	
CX3021	Finishing	All material	19 mm	•		•	
CX3060	Polishing	Plastic	15 mm				•
CX3061	Polishing	Plastic	22 mm				•
CX3028	Polishing	Plastic	15 mm	•	•		
CX3029	Polishing	Plastic	22 mm	•	•		
CX3822S	Chamfering	Plastic		•	•		
CX3823	Chamfering	Plastic		•	•		
CX3815	Chamfering	Plastic		•	•		
CX3820	Grooving	Plastic		•	•		
CX3824	Grooving	Plastic		•	•		
CX3812	Grooving	Plastic		•	•		
CX3821	High curve	Plastic		•	•		
CX3825	High curve	Plastic		•	•		

TOOLS

> Fulfill and enhance your daily tasks with dedicated tools designed and selected for you



Wooden Box with 5 Handles and 7 Blades – ECR001

5 nut driver handles ECRM01

	2.2 mm	Square blade	ECRC01
	2.0 mm	One cross blade	ECRC20
	2.0 mm	One star blade	ECRE20
	2.2 mm	One star blade	ECRE22
	2.5 mm	One star blade	ECRE25
	2.2 mm	One hex blade	ECRH22
	1.5 mm	One blade blade	ECRP15



Pocket Wooden Box – TOUR01

			Complete Screwdriver	Spare Blade (x4)
	1.2 mm	Blade screwdriver	TOUP12	TOUL12
	1.6 mm	Blade screwdriver	TOUP16	TOUL16
	1.9 mm	Blade screwdriver	TOUP19	TOUL19
	1.5 mm	Crossblade screwdriver	TOUC15	TOUL15
	2.0 mm	Crossblade screwdriver	TOUC20	TOUL20
	2.5 mm	Crossblade screwdriver	TOUC25	—



Screw Nutdriver Set – TOUA10

	1.6 mm	Blade screwdriver	TOUP36
	1.8 mm	Blade screwdriver	TOUP38
	1.5 mm	Hexa. screwdriver	TOUC35
	1.8 mm	Crossblade screwdriver	TOUC38
	2.02 mm	Hexa. nutdriver	ECRH02
	2.32 mm	Hexa. nutdriver	ECRH32
	2.82 mm	Hexa. nutdriver	ECRH82
	2.32 mm	Star nutdriver	ECRE52
	2.82 mm	Star nutdriver	ECRE82



Mixed Set – TOUA01

	1.2 mm	Blade screwdriver	TOUP10
	1.6 mm	Blade screwdriver	TOUP15
	1.8 mm	Blade screwdriver	TOUP18
	2.3 mm	Blade screwdriver	TOUP23
	1.5 mm	Crossblade screwdriver	TOU006
	2.0 mm	Crossblade screwdriver	TOU007
	2.2 mm	Star nutdriver	ECRE12
	2.5 mm	Star nutdriver	ECRE15
	2.8 mm	Star nutdriver	ECRE18
	2.2 mm	Hexa. nutdriver	ECRH12



MISK08
Tripod



MISK09
Demo lens holder



N82A11
Edger adjusting gauge



L11S44
Pattern holder calibration tool



SPH001
Measuring tools lens Clock



COM003
Large thickness apparatus



L1108P
Touch screen pen



CRA002
Marker bullet tip 1 mm,
opaque ink white lens



99-AOP
Handy All Off Pen
Easily erase progressive
ink markings



99-AO
Instantly dissolves and removes
ink markings faster and safer than
acetone, in 3 seconds flat – 16 oz.



N82A03
Deblocker plier



JAU002
Lens hole gauge



SET OF 3 REAMERS
1.4 MM – EQU001
1.75 MM – EQU002



EQU003
Set of 2 Needles Reamers
0.5 mm -0.7 mm



EQU010
Set of 6 Reamers
1.4 mm to 2.1 mm



LIMA10
Set of 10 Mixed files



LIMA01
File
Round, thickness: 1.3 mm

■ SPINDLES / TOOLS



M24S730
Chamfering spindle
MR BLUE



M24S340
Grooving/Milling spindle
MR BLUE



M24S760
Drilling spindle
MR BLUE



M24S280
Engraving tool
MR BLUE



M22S430
Chamfering spindle
MR ORANGE

SERVICES AND SUPPORT

Essilor Instruments USA offers a variety of support plans for all Essilor equipment and especially Essilor finishing systems.

Our support plans offer added protection beyond the standard one-year warranty on products.

With a support plan from Essilor Instruments USA, you don't have to worry about unexpected repair expenses. You have peace of mind knowing that you have protected your equipment investment and that our well-trained team of service professionals is available to provide prompt and effective on-site service.

HOW DO YOU BENEFIT:

- Reduced stress knowing your equipment is covered
- Protection from unplanned repair expenses
- Priority scheduling for repairs
- Conversion of unpredictable repair expenses to consistent fixed expenses for more accurate annual budgeting.



PRODUCT INDEX

1 EXAMINATION ROOM

- Phoropters p 4
- Chart systems p 5
- Classic slit lamps p 6
- Digital slit lamps p 8
- Digital camera p 9
- Stands and chairs p 10
- Examination tables and stools p 14
- Exam lane sets p 16
- Applanation tonometers p 19

2 SCREENING AND DIAGNOSTIC ROOM

- Auto kerato-refractometers p 22
- Corneal topographer p 23
- Wavefront aberrometers p 24
- Non-contact tonometers p 26
- Fundus camera p 28
- Automated perimeter p 30
- Lensmeters p 31

3 LENS FINISHING SYSTEMS

- Mr. Blue p 34
- Mr. Orange p 36
- Neksia p 38
- Delta2 p 40
- Pro-E 600 p 42
- Tess family p 44
- Essibox p 45

4 DISPENSING EQUIPMENT

- Pupillometer p 48
- Essilor Ditest p 48
- Pal-ID engraving identifier p 48
- Frame warmer p 49
- Ultrasonic cleaners p 49
- Hand edgers p 50
- Tensiscopes p 51
- Dispensing Essentials Kit p 51

5 VISION SCREENERS AND TESTS

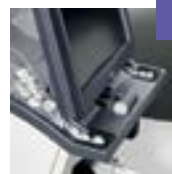
- OPTEC PLUS p 54
- OPTEC 5000 Series p 55
- Functional Vision Analyzer p 56
- Stereotests and Vision Products p 57

6 HANDHELD INSTRUMENTS

- Ophthalmoscopes p 60
- Retinoscope p 60
- Transilluminator p 61
- Indirect binocular ophthalmoscopes p 61
- Optometric accessories p 62
- Exam Lane Essentials Kit p 62

7 ACCESSORIES AND CONSUMABLES

- Edging consumables p 66
- Wheels p 68
- Tools p 70
- Services and support p 72
- Product index p 73



ESSILOR INSTRUMENTS USA
8600 W. Catalpa Avenue, Suite 703. Chicago, IL 60656
phone: 855.393.4647 - email: info@essilorinstrumentsusa.com
www.essilorinstrumentsusa.com